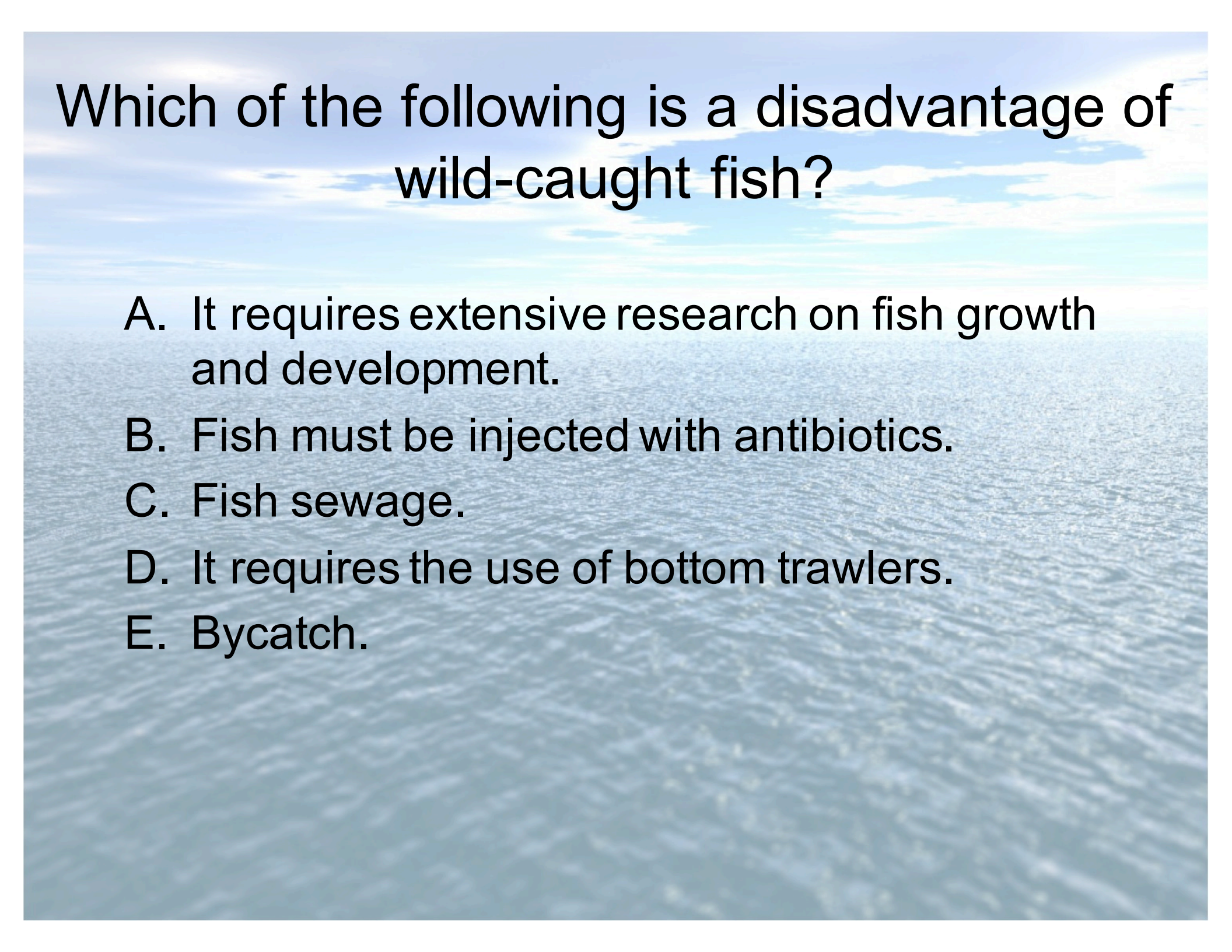


Which of the following is one of the underlying causes of overfishing?

- A. Human overpopulation.
- B. Fishing gear that prevents bycatch.
- C. An increased demand for aquacultured fish.
- D. An overabundance of predatory fish.
- E. ALL OF THE ABOVE.

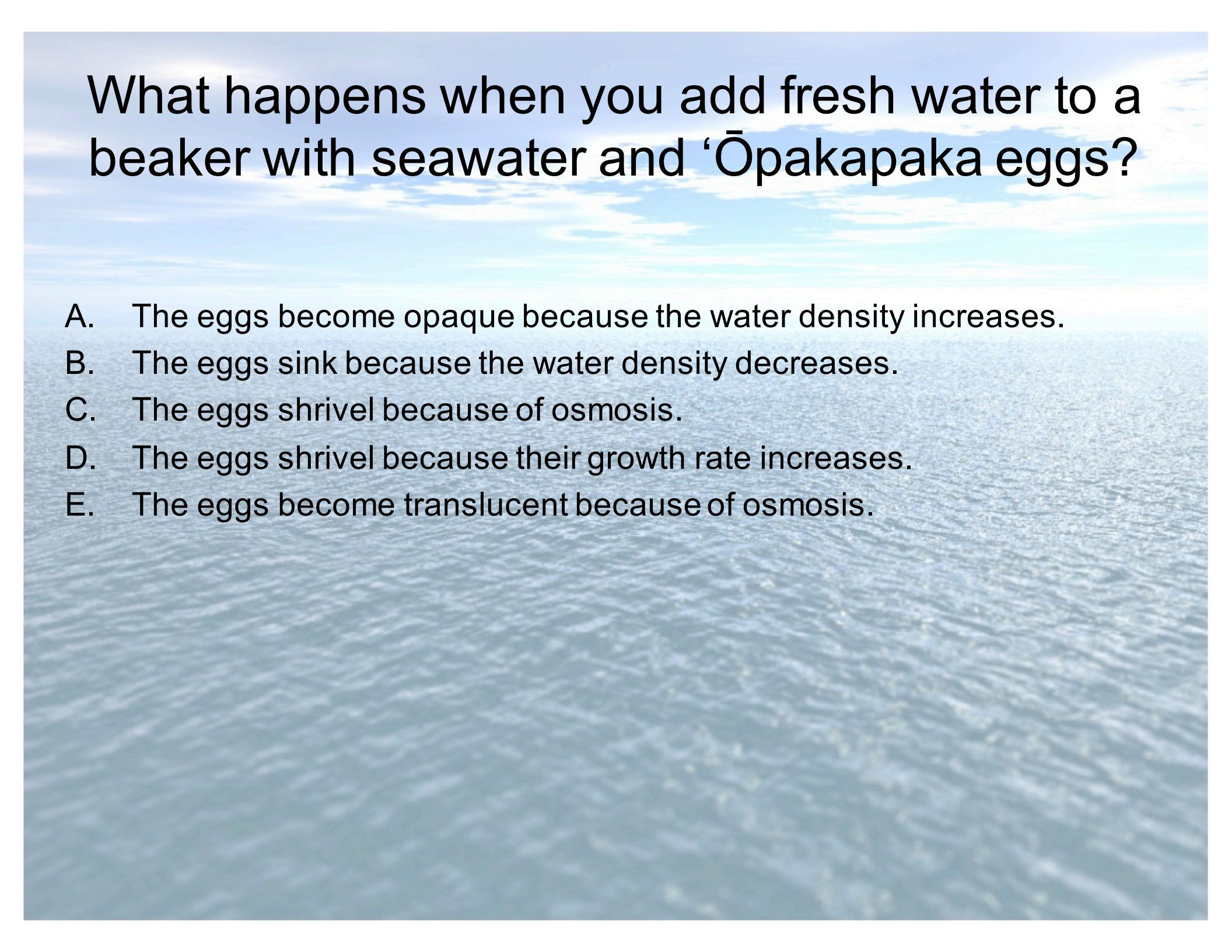
Which of the following is a disadvantage of aquaculture?

- A. It increases fishing pressure on natural populations.
- B. It increases bycatch.
- C. It is a relatively unpredictable food source.
- D. It may make fish susceptible to disease outbreaks.
- E. It uses bottom trawling nets.



Which of the following is a disadvantage of wild-caught fish?

- A. It requires extensive research on fish growth and development.
- B. Fish must be injected with antibiotics.
- C. Fish sewage.
- D. It requires the use of bottom trawlers.
- E. Bycatch.

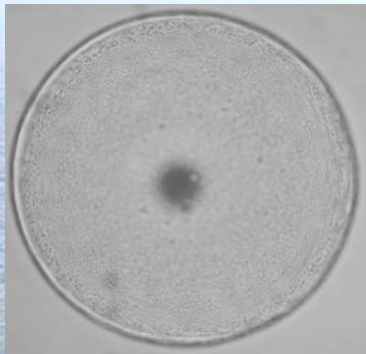


What happens when you add fresh water to a beaker with seawater and 'Ōpakapaka eggs?

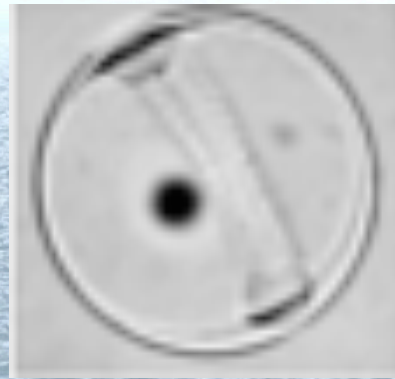
- A. The eggs become opaque because the water density increases.
- B. The eggs sink because the water density decreases.
- C. The eggs shrivel because of osmosis.
- D. The eggs shrivel because their growth rate increases.
- E. The eggs become translucent because of osmosis.

Which of these is an early stage embryo?

A.



B.



C.



D.



E.



When is the PEAK spawning season of 'Ōpaka'paka?

- A. Summer
- B. All year
- C. Winter
- D. Full Moon
- E. New Moon

Which of the following is NOT true about fish spawning?

- A. Environmental cues allow fish to synchronize their breeding.
- B. It can be caused by temperature changes.
- C. Fish eggs and larvae experience low mortality rates.
- D. It can be caused by moon phases.
- E. Fish change their behavior when they are ready to spawn.

What does 'Fishing down the foodweb' mean?

- A. Targeting larger, piscivorous fish species first, then smaller, herbivorous fish.
- B. Targeting the most eaten (by humans) fish first, then less desirable ones.
- C. Targeting prey fish first, then their predators.
- D. Targeting smaller fish first, then larger fish.
- E. Targeting fish closer to the surface first, then bottom dwelling fish.